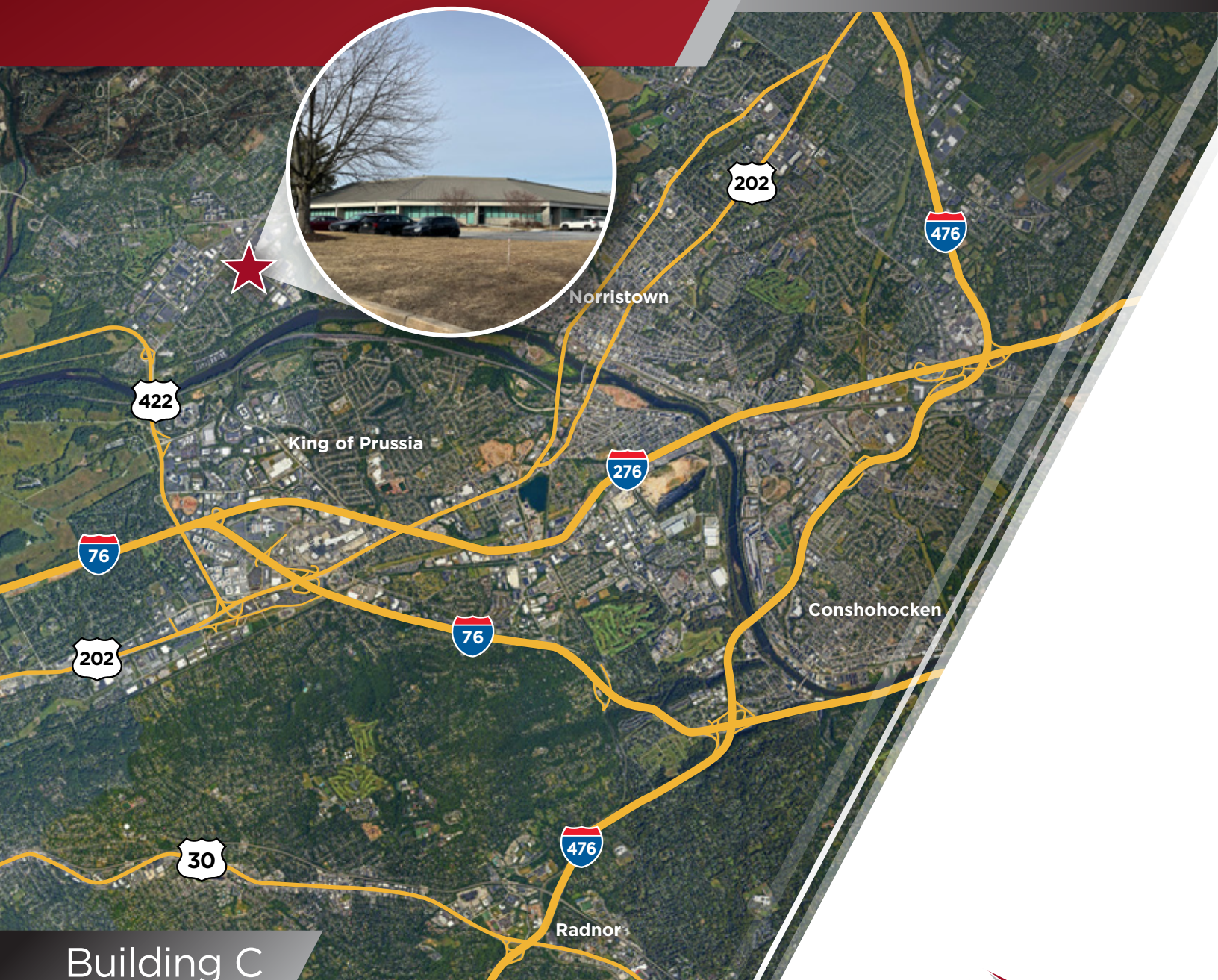


2495

Boulevard of the Generals
NORRISTOWN, PENNSYLVANIA

**AVAILABLE
FOR LEASE**



Building C

±13,180_{SF}



Christopher Butera
Director
215 963 4011
chris.butera@cushwake.com

Kevin Hagenberg
Managing Director
+1 610 306 7968
kevin.hagenberg@cushwake.com

Jonas Skovdal
Executive Managing Director
610 772 2005
jonas.skovdal@cushwake.com



LOCAL ACCESS

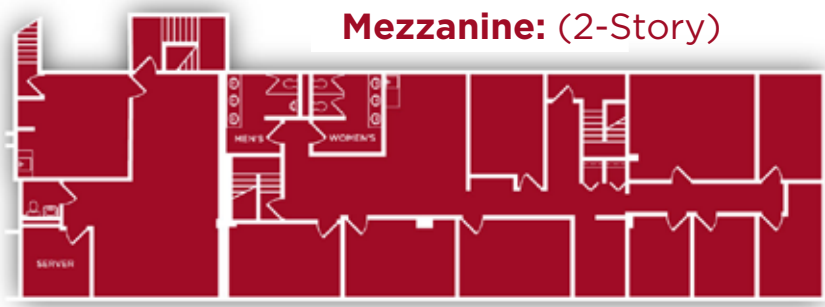
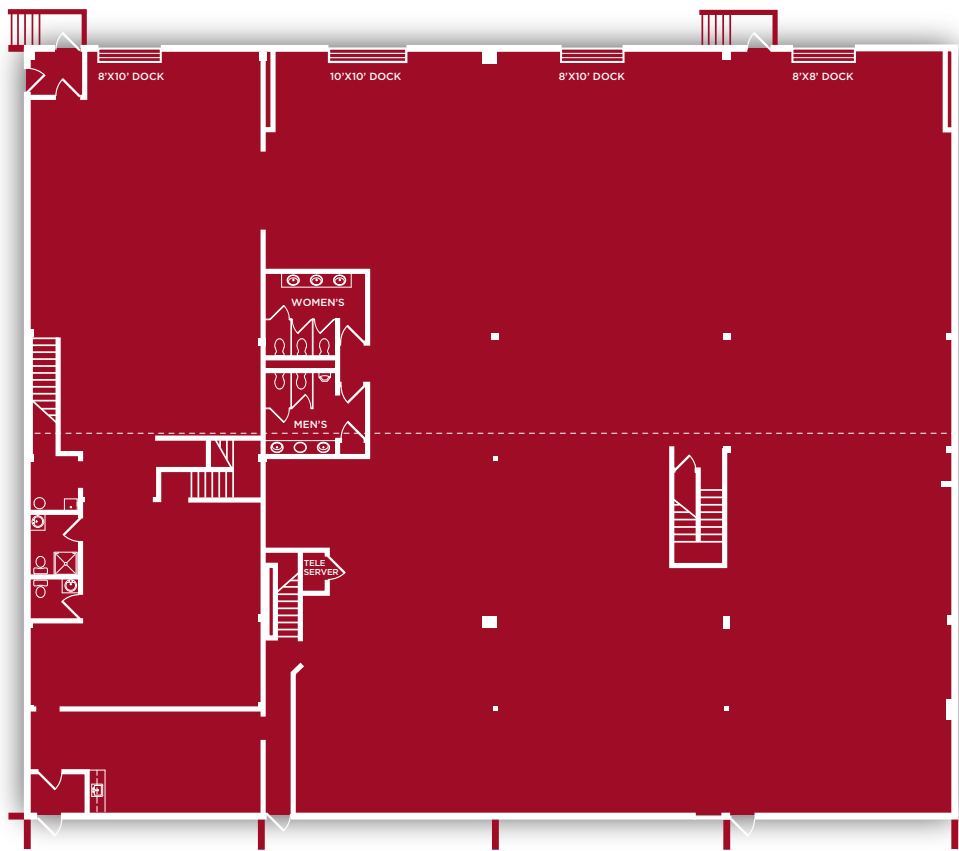


HIGHWAYS

	1.6 MILES	4 MINS
	5 MILES	10 MINS
	6 MILES	12 MINS
	9 MILES	13 MINS

King of Prussia Mall

King of Prussia
Town Center

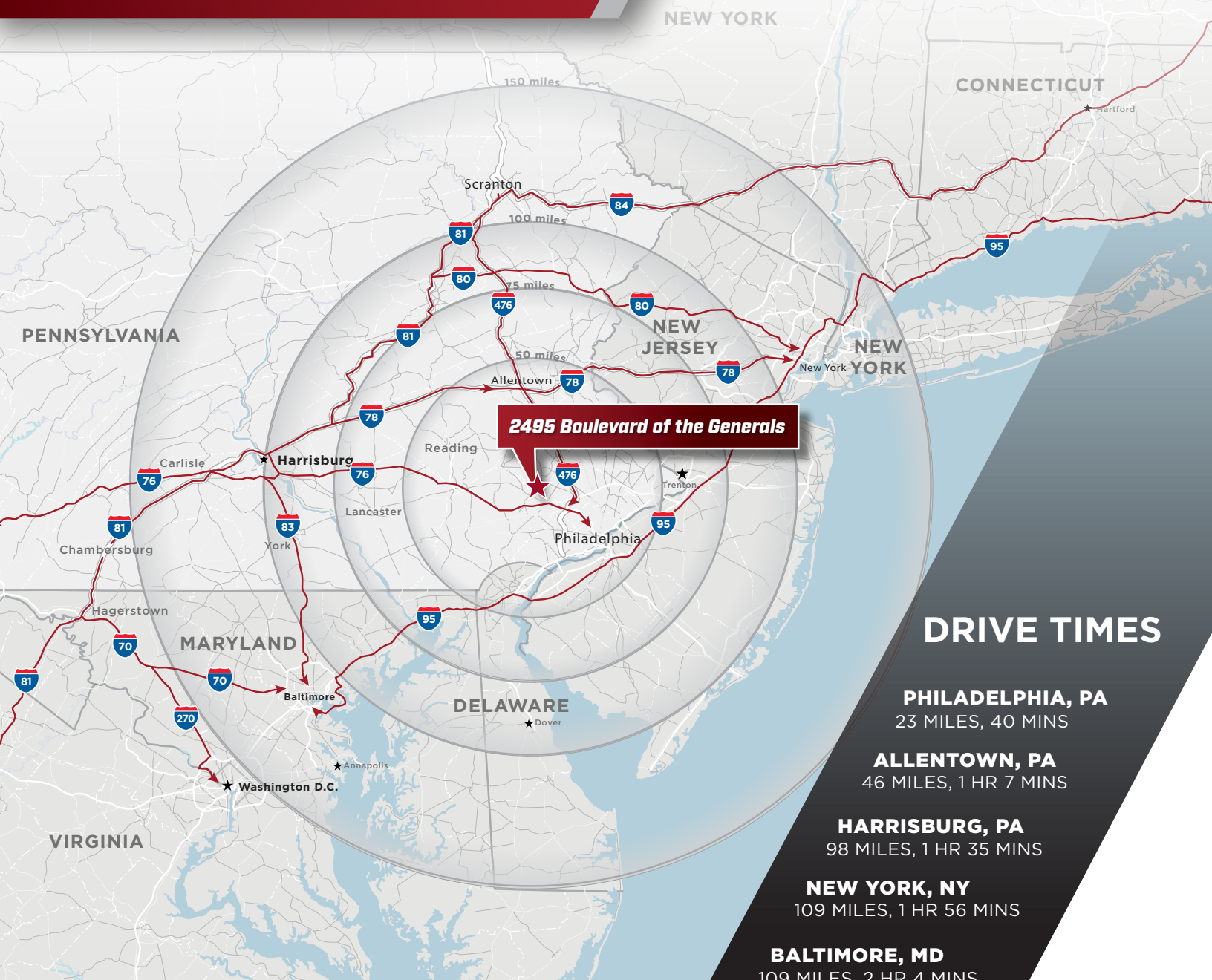


Mezzanine: (2-Story)

Available SF:	±13,180 SF	Total Building SF:	±16,970 SF
Mezzanine:	2-Story	Loading:	±4 Loading Docks
Clear Height:	20'10"	Lighting:	
Power:		Fire Protection:	Wet System

REGIONAL MAP

FOR LEASE



2495 Boulevard of the Generals

DRIVE TIMES

PHILADELPHIA, PA
23 MILES, 40 MINS

ALLENTOWN, PA
46 MILES, 1 HR 7 MINS

HARRISBURG, PA
98 MILES, 1 HR 35 MINS

NEW YORK, NY
109 MILES, 1 HR 56 MINS

BALTIMORE, MD
109 MILES, 2 HR 4 MINS

WASHINGTON, D.C.
147 MILES, 2 HR 58 MINS

BOSTON, MA
332 MILES, 5 HR 46 MINS

Cushman & Wakefield of Pennsylvania, LLC.
1650 Market Street, 48th Floor | Philadelphia, PA 19103
+1 215 963 4000

cushmanwakefield.com

For More Information, Please Contact:

Christopher Butera

Director

215 963 4011

chris.butera@cushwake.com

Kevin Hagenberg

Managing Director

+1 610 306 7968

kevin.hagenberg@cushwake.com

Jonas Skovdal

Executive Managing Director

610 772 2005

jonas.skovdal@cushwake.com

Cushman & Wakefield of Pennsylvania, LLC is the Owner's exclusive agent for the property.

Cushman & Wakefield Copyright 2024. No warranty or representation, express or implied, is made to the accuracy or completeness of the information contained herein, and same is submitted subject to errors, omissions, change of price, rental or other conditions, withdrawal without notice, and to any special listing conditions imposed by the property owner(s). As applicable, we make no representation as to the condition of the property (or properties) in question.

