

Industrial & Logistics | For Lease

# Berks Corporate Center

## 200 Corporate Drive

Reading, Pennsylvania

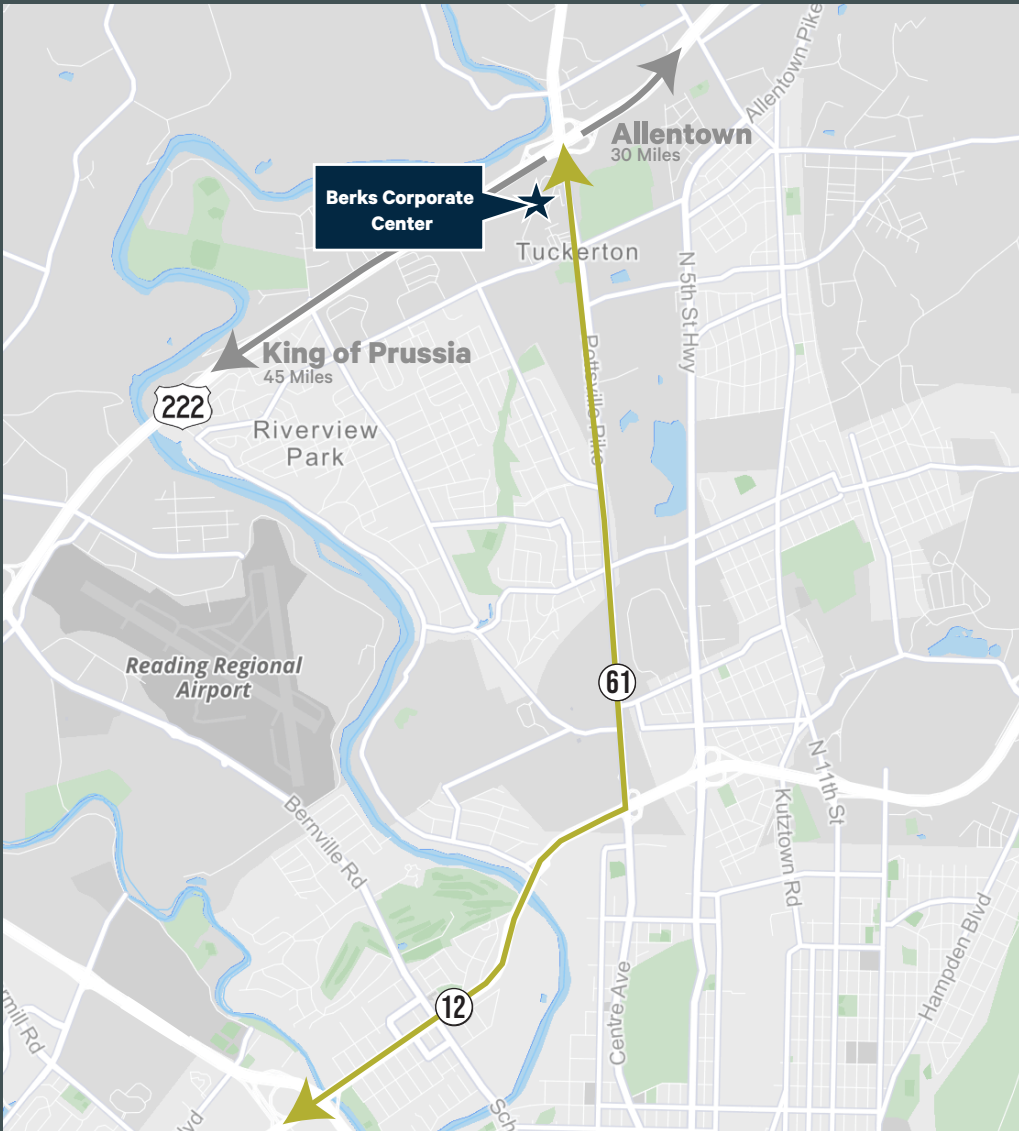
For Lease:  $\pm 9,600$  SF &  $\pm 4,800$  SF Warehouse / Manufacturing



# Site Plan

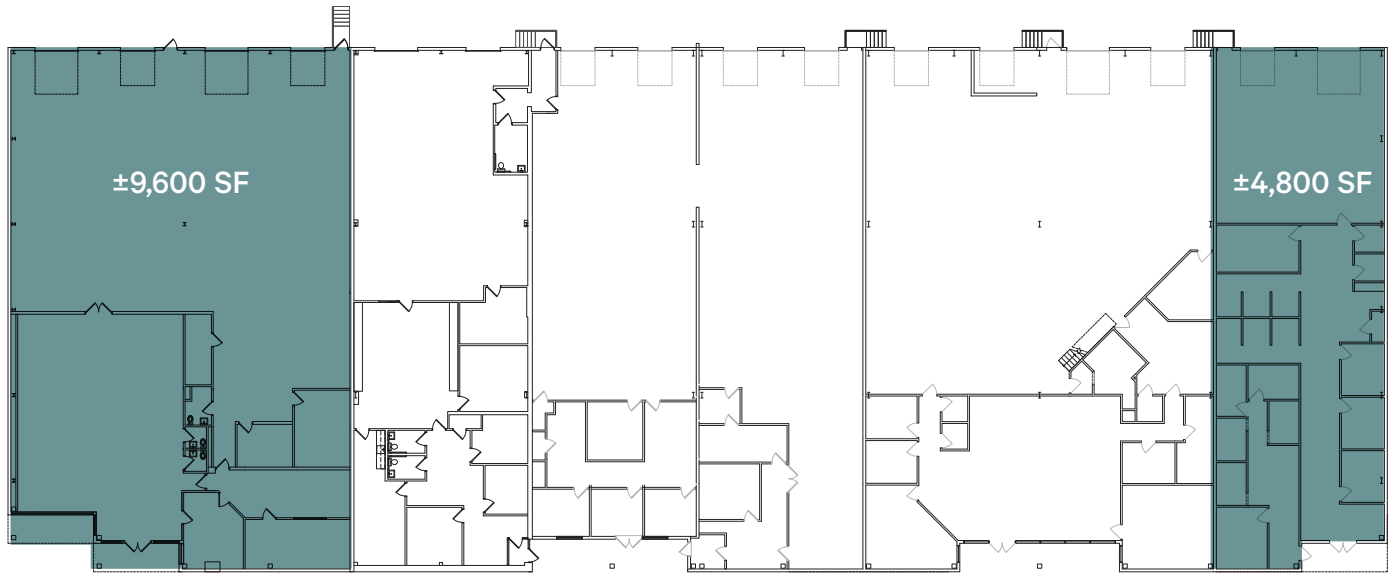


# Location Map



- 61 0.4 MILES
- 222 0.8 MILES
- 422 4.6 MILES
- INTERSTATE 76 17.8 MILES
- INTERSTATE 476 32.9 MILES

# Floor Plan



## Building Highlights

<b>Availability:</b>	Immediate	<b>Loading</b>	<ul style="list-style-type: none"> <li>• ±9,600 SF Unit - Two (2) Dock Doors and Two (2) Drive-In Doors</li> <li>• ±4,800 SF Unit - One (1) Dock Door and One (1) Drive-In Door</li> </ul>
<b>Available SF:</b>	<ul style="list-style-type: none"> <li>• ±9,600 SF</li> <li>• ±4,800 SF (1,659 SF Office)</li> </ul>	<b>Column Spacing:</b>	40' X 40'
<b>Total Building:</b>	±38,400 SF	<b>Electrical:</b>	208 Volt, 3-Phase
<b>Ceiling Height:</b>	22' Clear at Peak	<b>Zoning:</b>	I-1 - Limited Industrial District, Muhlenberg Township, Berks County
<b>Car Parking:</b>	Eighty (80) Total for the Building		

# Site Location



## Contact Us

**Tucker McBride**

Senior Associate  
+1 610 804 4053  
tucker.mcbride@cbre.com  
Lic. PA

**Nicholas Sather**

Associate  
+1 717 540 2709  
nicholas.sather@cbre.com  
Lic. PA

**Paul Touhey**

Executive Vice President  
+1 610 251 5126  
paul.touhey@cbre.com  
Lic. PA, NJ, DE

**CBRE, Inc.**

555 E. Lancaster Avenue  
Suite 120, Radnor, PA 19087  
+1 610 251 0820  
Licensed Real Estate Broker

© 2024 CBRE, Inc. All rights reserved. This information has been obtained from sources believed reliable, but has not been verified for accuracy or completeness. You should conduct a careful, independent investigation of the property and verify all information. Any reliance on this information is solely at your own risk. CBRE and the CBRE logo are service marks of CBRE, Inc. All other marks displayed on this document are the property of their respective owners, and the use of such logos does not imply any affiliation with or endorsement of CBRE. Photos herein are the property of their respective owners. Use of these images without the express written consent of the owner is prohibited.